

1984

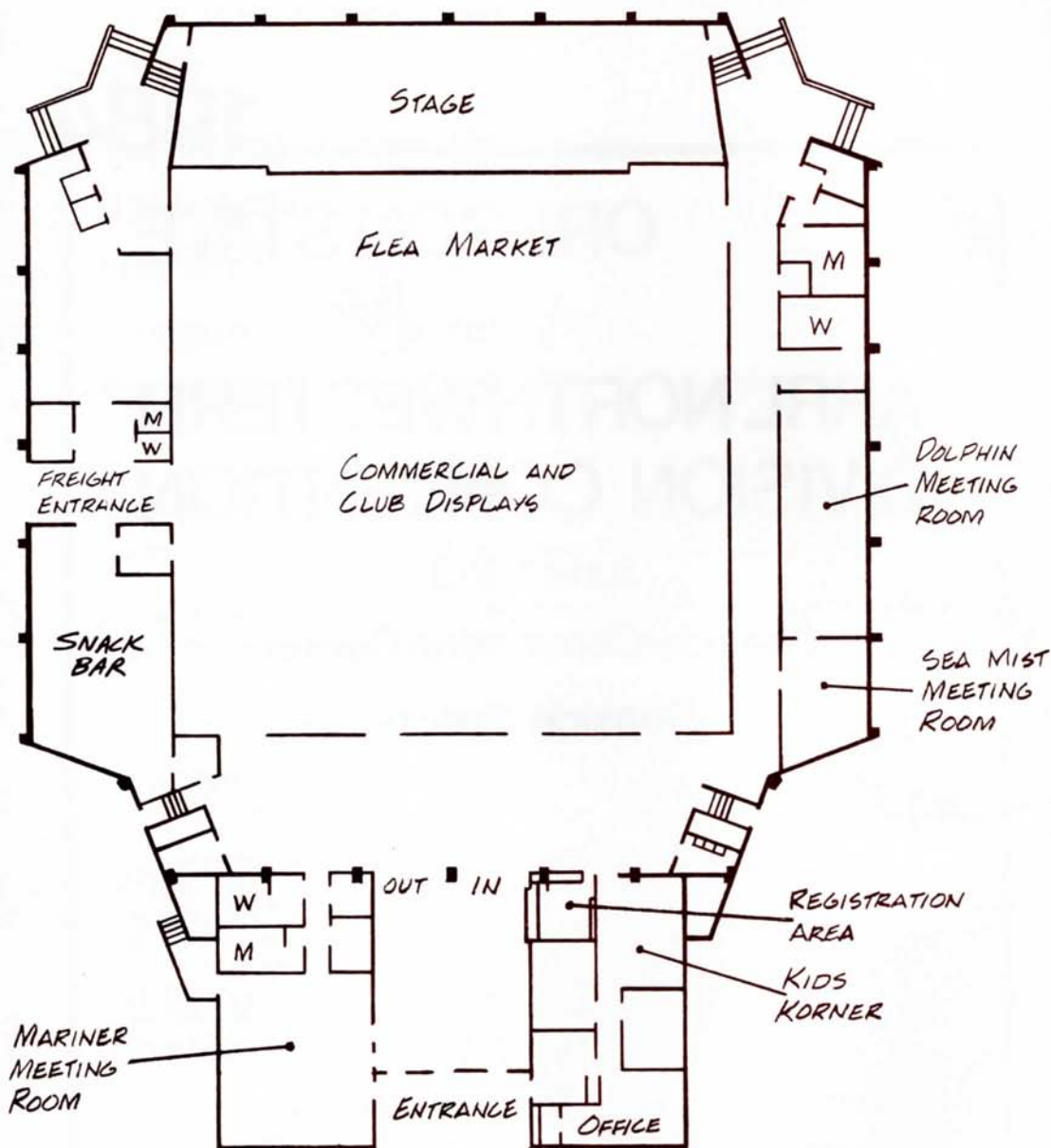
**OREGON STATE
&
ARRL NORTHWESTERN
DIVISION CONVENTION**

June 1-2-3

Seaside Convention Center

Seaside, Oregon

**Co-Sponsored By
OREGON TUALATIN VALLEY AMATEUR RADIO CLUB
and the
NORTH COAST REPEATER ASSOCIATION**



FOR CONVENTION INFORMATION
AND ANNOUNCEMENTS LISTEN ON:
146.52 (SIMPLEX)
145.45 (-600KHz)

VICTOR ATIYEH
GOVERNOR



OFFICE OF THE GOVERNOR
STATE CAPITOL
SALEM, OREGON 97310

June 2, 1984

GREETINGS:

On behalf of all Oregonians, I welcome you to Seaside
and the fourth annual

OREGON STATE HAM CONVENTION.

Once again, this convention should provide the best
of everything -- Oregon's breathtaking coastline, a
host of informative speakers and an ideal opportunity
to "talk shop" with fellow hams.

May you have a most successful and enjoyable convention.

Sincerely,

A large, stylized handwritten signature in dark ink, which appears to read "Victor Atiyeh". The signature is fluid and cursive, with a long horizontal stroke extending to the right.

Victor Atiyeh
Governor

Schedule of Program

Friday, June 1

5 p.m. to 8 p.m. Registration & Exhibits open.

Saturday, June 2

All Day	Snack Bar & Ladies' Treasure Hunt
8 a.m. to 5 p.m.	Registration, Exhibits & Flea Market open.
9 a.m.	Kid's Cartoons until 5 p.m. Volunteer Testing (by previous appointment) Our Saviour Lutheran Church 320 1st Avenue, Seaside
10 a.m.	Ladies—Communication & Problem Solving by Claudia Gray Landmark Motor Inn, Room 125
11 a.m.	Repeater Owners Forum (Sea Mist Room)
11:30 a.m.	Ladies' Lucheon \$4.00 per person Seaside Elks Club, 324 Avenue A
12 Noon	Council of Clubs (Sea Mist Room) Bunny Hunt
2 p.m.	Ladies—Personal Service Demonstrations Landmark Motor Hotel, Room 125
3:30 p.m. to 5 p.m.	ARRL Forum Landmark Motor Inn, Room 125
6 p.m. to 7 p.m.	Cocktail Hour (Convention Center Foyer)
7 p.m. to 9:30 p.m.	Banquet (Convention Center)

Sunday, June 3

7:30 a.m.	ARRL Breakfast \$3.00 per person Seaside Elks Club, 324 Avenue A
9 a.m.	Registration, Exhibits & Flea Market open.
12:30 to 1:30 p.m.	Prize Drawings
2 p.m.	Convention closes. "Hope to See You Next Year"

Events ... June 1-2-3

MARINER ROOM

DOLPHIN ROOM

7 p.m.	<i>31 Years, 120M QSO & 22M QSL cards</i> Stan Griffiths, W7NI
8 p.m.	<i>Emergency Services & the Red Cross</i> Tom Rickert, N7CPA; Dave Lievsay, K7UUH, Lea Ball, AL7W

9 a.m.	<i>Antenna Design & Testing</i> Tim Pettis, KL7WE	<i>AMTOR - Is it Better than RTTY?</i> Dr. Alan Chandler
10 a.m.	<i>Basic Antennas for fun & pleasure</i> Mark Walker, W7CLU	<i>OSCAR</i> Bob Herndon, W7XN
11 a.m.	<i>Traffic Handling Basics</i> Vic Seeberger, W7VSE	<i>Introduction to Moonbounce</i> Lance Collister, WA1JXN
12 Noon	<i>Baluns</i> Roy Lewallen, W7EL	<i>ELT's SAR-SAT</i> Jim Holden, State of Oregon
1 p.m.	<i>Over The Horizon Radar</i> Ed Lyon, Stanford Research Institute	<i>Interfacing Computers & Amateur Radio</i> Dr. Phil Anderson, WØXI
2 p.m.	<i>DXpedition</i> Bill Rindone, WB7ABK	<i>ARRL Preview</i> Larry Price, W4RA
3:30 p.m.	<i>Improving Trap Antennas Efficiency,</i> Kenneth Glanzer, K7GCO	<i>Packet Radio</i> John Gates, N7BTI

9 a.m.	<i>National Weather System — Weather Warning System.</i> Phil Peck
10 a.m.	<i>Repeaters - A general overview</i> Jim Clary, WB9IHH
11 a.m.	<i>1st Kingman Reef DXpedition</i> W60AT Slides & Sound

Note: The convention's sponsors reserve the right to alter the convention schedule.



Henry has the amplifier you want!

Take your choice. The world famous 2K Desk Classic, 2K Console Classic and 3K Console Classic HF amplifiers speak for themselves. Now to complete your range of choice, the superb new 1002-A and 2002-A for 146 MHz and the 1004-A and 2004-A for 440 MHz.

Now a veritable cornucopia of superb amplifiers. Just make your choice!

2K Classic...the culmination of more than fifteen years of developing the 2K series into the world famous line that sets the standards for top quality HF linears. A true "workhorse"; built to loaf along at full legal power, trouble free, for years of hard service. Operates on all amateur bands, 80 through 15 meters (export models include 10 meter).

2K Classic "X"...We can't think of any way to make this magnificent 2000 watt amplifier better. Rugged...durable...the last amplifier you may ever need to buy.



2KD Classic...a desk model designed to operate at 2000 watts effortlessly, using two Eimac 3-500 Z glass envelope triodes, a Pi-L plate circuit and a rotary silver plated tank coil. We challenge

you to find a better desk model for even a thousand dollars more.

3K Classic...uses the superb Eimac 8877 tube. More than 13db gain. We believe the 3K to be the finest amateur linear available anywhere...the amplifier of every amateur's dreams.

Henry amateur amplifiers are available from select dealers throughout the U.S. and are being exported to amateurs all over the world. Henry Radio also offers a broad line of commercial FCC type accepted amplifiers for two way FM communications to 500 MHz, as well as special RF power generators for industrial and scientific users. Call or write Ted Shannon or Mary Silva for full information.

We stock these plus many other line names:
AEA • ARCO • ASTRON • B & K • BIRD •
COLLINS • CONNECT-SYSTEMS •
CUSHCRAFT • DRAKE • EIMAC • HAL •
HUSTLER • HY-GAIN • ICOM • KENWOOD •
LARSEN • NYE • ROBOT • YAESU

2002-A...a bright new rework of our popular 2002 2 meter amplifier. Uses the new Eimac 3CX800A7. The RF chassis uses a 1/4 wave length strip line design for extremely reliable approach. It provides 2000 watts input for SSB and 1000 watts input for CW. Because this tube is rated at an unheard of 15dB gain, only about 25 watts drive is required for full output.

2004-A is identical to the 2002A except that it is set up for the 430 to 450 MHz band. This amplifier will use a 1/2 wave strip line and offer all of the same specifications as the 2002A. This will replace our limited production 2004.

1002-A A 2 meter amplifier with the same design as the 2002A, except using one 8874 tube for 1/2 power specifications. Rated at 600 watts PEP output and 300 watts continuous carrier output. It employs the same strip line design as the 2002A.

1004-A...a half-power version of the 2004A. Will cover the 430 to 450 MHz band using a 1/2 wave strip line design.



Henry Radio

2050 S. Bundy Dr., Los Angeles, CA 90025
931 N. Euclid, Anaheim, CA 92801
Butler, Missouri 64730

(213) 820-1234
(714) 772-9200
(816) 679-3127

TOLL FREE ORDER NUMBER: (800) 421-6831 For all states except California. Calif. residents please call collect on our regular numbers.



SPECIAL PROGRAMS FOR THE LADIES

Saturday

10:00 a.m. **COMMUNICATIONS & PROBLEM SOLVING** Claudia Gray from the American Association of University Women will present a program on Communications & Problem Solving from the point of view that you cannot solve problems without communications. The techniques are applicable to any organization, any group that has to work together and in any kind of a family or relationship structure. Claudia will use actual family experiences with her husband and two sons. Claudia represents 6 states on the AAUW board and travels for the AAUW giving workshops.

Location: Landmark Motor Inn, Room 125

11:30 to 1 p.m. **Ladies Luncheon** \$4.00 per person

Location: — Seaside Elks Club
324 Avenue A

Program — **Beauty Adventures**. New summer looks for the eyes, cheeks & lips. Two or three models from the audience will be called upon for this 30-40 minute program and demonstration put on by Barbara Kreitzer (wife of Jack, KA7MUX), Lee Mireiter and Bonnie Jensen.

2 p.m. **Personal Service demonstrations & further new summer looks** in cosmetics by Mary Kay will be demonstrated by independent beauty consultants, Barbara Kreitzer, Lee Mireiter and Bonnie Jensen. Drop in to find out how to look your best this summer with the latest in new cosmetics.

Location: Landmark Motor Inn, Room 125

SPECIAL EVENTS

Saturday, June 2nd 9 a.m. until complete

VOLUNTEER HAM TESTING

Technician & General Class tests will be given

Location: Our Saviour Lutheran Church
320 1st Avenue

Note: Advance registrations have priority
WALK-INS POSSIBLE

ARRL Breakfast \$3.00 per person

Sunday, June 3rd 7:30 a.m.

Location: Seaside Elks Club
324 Avenue A

Host: Larry Price, W4RA, ARRL President
Program: Volunteer Examiners Information

CONTEMPORARY TECHNOLOGY INC.



RTTY/CW DECODER INTERFACE

Now with CTI all you need is the TMC-1B, a micro computer, soft ware and your transceiver and you are fully equipped with a first class modern RTTY station. No computer experience is needed! Even if you just pulled your computer out of the box you can be on the air like a pro in no time.

TMC-1B from Contemporary Technology will work with all the new fancy features and gimmicks such as program exchange and "Mailbox" using your station to access another station automatically (or the reverse). Many new features will be coming on the market and all should work with the CTI TMC-1B. All these features are controlled by software and the only change that might be needed would be a cable change to go into a different port on your computer, depending on your particular computer and software.

Only the CTI TMC-1B will give you all these features at such a low price.

FEATURES

• AUTO START ON RTTY

Auto start circuit with a variable control on the front panel, you can adjust it to only print when you are on a solid RTTY signal. This is an important feature lacking in most units. With most units available on the market you will print characters all over the screen, a real nuisance!

• L.C. TUNED CIRCUIT FILTER

Only with L.C. tuned circuits will you be able to copy the weaker DX signals on the H.F. bands. With active filters you will need a very good signal to print accurately.

• DUAL SHIFT

Amateur standard 170 and 425 receive for commercial frequencies.

• RS 232 / TTL COMPATABLE

• CW SENSE AND CW FREQUENCY CONTROLS

These controls give you a threshold setting to copy a CW signal. This makes it less likely to print noise. With the CW frequency adjust control you are able to adjust your rig farther from noise, it also will allow you to use most CW audio filters.

• MONITOR

CTI has a built-in monitor speaker to allow you to hear the signal as it is sent over the air in CW and RTTY mode. Also, an external speaker can plug into the TMC-1B for a loop through from your rig (or rigs) to a speaker.

• MARK, SPACE AND CW LEDS

The TMC-1B interface uses a CW LED to tune in CW. Mark and space LEDs will assure that you are on the RTTY signal, allowing you to see mark and space on an incoming RTTY signal.

• SWITCHABLE I/O

With CTI we make it easy to switch between two rigs (H.F. and V.H.F.), just flip a switch! No plugs and cables to move.

• RELAY PTT AND CW KEYING

No need to worry about - or - keying, CTI uses reed relays on the output for compatibility

• HIGH FRONT END GAIN

You can have your rig so low you can't even hear it, or so high you can't stay in the shack.

The CTI TMC-1B is not just a unit to get you on the air, but a unit designed to have the highest reliability for years to come. Model TMC-1B is fully guaranteed for one full year on all parts and labor.

The CTI TMC-1B is solidly housed in an attractive metal case for superior RF shielding. The TMC-1B measures 11" wide x 3 1/2" high x 10 1/2" deep. Simple hook-up uses RCA jacks for hook-up for transceiver. Just run a line to MIC, to PTT, speaker, and to CW key. Only one cable to the computer, and the cable is available as an optional accessory by CTI, or make your own. All plugs for the computer interface are supplied as standard, the CTI TMC-1B will work up to 300 BAUD ASCII.

CONTEMPORARY TECHNOLOGY INC. • P.O. BOX 1083
• SALEM, OR 97308 • (503) 399-7406

ONLY CTI MODEL TMC-1B INCLUDES ALL THESE FEATURES IN ONE LOW PRICED UNIT

Check our booth for a special convention price.

BANQUET SPEAKER



Roy Neal, K6DUE

HAM

Amateur radio operator Roy Neal began hamming in 1934 when he was first licensed as W3GIB in the Philadelphia suburb of Wayne, Penna. From home brew equipment he migrated into early experimental work including aeronautical mobile transceivers on 5 meters.

Immediately following World War II, Roy went back on the air as D4ACA in Hochst, Germany. He was Program Manager for the American Forces Network in Europe and handled phone patches by the hundred.

Post war, back in Philadelphia, W3GIB was among the early experimenters with tri-band antennas and two meter relay stations (known today as repeaters).

When he went to California, in 1952, Roy picked up his present call, K6DUE. Active on most amateur bands ever since, he currently operates 220 Mhz, 2 meters and 10 through 75 meter bands with occasional forays into satellite tracking to spice a diet of DX and mobile QSOs.

He is probably best known in the amateur fraternity because of his documentaries for the ARRL, "Moving Up To Amateur Radio" and "The World of Amateur Radio."

Current project, "Amateur Radio's Newest Frontier" is in production.

"STS-9: BEHIND the SCENES"

NBC News Correspondent Roy Neal is the network's leading expert on aerospace coverage, and has been present at every one of America's major space flights.

He worked all of the Mercury flights, directly from Cape Canaveral (then called Cape Kennedy), and has covered all the Gemini and Apollo flights from the Manned Spacecraft Center in Houston, Texas. Neal is currently working the Space Shuttle beat and was instrumental in setting up NBC's coverage plans.

In addition to reporting the manned flights, he has also covered other aspects of the space age, including Ranger, Lunar Orbiter and Surveyor flights to the moon, Mars and Venus, recently Voyager's to Jupiter and Saturn.

He also finds time to report on all kinds of news stories on the network's "Nightly News" and "Today." He is also in charge of NBC's Radio operations in Burbank and files frequent reports for the radio networks.

At most of the national political conventions since 1960, he has been in charge of the network's video tape operations, putting together all recorded spots from mobile units and the convention floor.

Neal was born in Bryn Mawr, Pa., and graduated from the University of Pennsylvania, where he majored in journalism, English and drama.

His news career started as an announcer and sportscaster for radio station WIBG, Philadelphia, in 1940. He entered the Army as an infantryman, in 1943, and was discharged in 1946 as Program Manager of the Armed Forces Radio Network for all of Europe.

He returned to the Philadelphia radio station until November of 1946 when he joined the news staff of Philadelphia television station WPTZ.

When the NBC Television Network was extended to the West Coast, Neal joined NBC News in March of 1952, and was sent to California to set up the network's West Coast news bureau. He has pioneered many radio and television techniques — wearing the two hats of producer and correspondent.

Neal and his wife, the former Patsy McBride of High Point, N.C., have two children, Mark, 22; David, 26. David is an associate producer with NBC Sports in New York.

SPEAKER TOPIC INFORMATION

The ARRL, Recent Activities & Other Information. Larry Price, W4RA, President of the ARRL and Jim Clary, Repeater Directory Editor will be on hand to present this program on the latest news & views from headquarters. FCC Rulings, volunteer testing are just a couple of the many topics to be discussed. Be there to get your questions answered by the right people.

Repeater Owners Forum. Mr. Jim Clary, WB9 IHH, the league's expert on the legal and administrative aspects of repeater operation and editor of the Repeater Directory will be on hand to answer some of the questions you may have concerning your repeater. Clay Freinwald, K7CR the N/W Division UHF Repeater Advisory Committee representative and Dale Justice, K7WWR representing the Oregon Region Relay Council will also be on hand to discuss repeater coordination in the Northwest. This is a must for all repeater owners.

Baluns — What They Do and How They Do It. Roy Lewallen, W7EL will present an explanation of just what it is a balun does in an antenna system, what problems they can and cannot cure, and why. Some surprising conclusions about baluns are presented with supporting experimental results.

Interfacing Computers & Amateur Radio. Dr. Phil Anderson, W0XI, President of Kantronics will discuss the use of computers in amateur radio today, and what type of equipment is necessary to receive and transmit coded formats with a computer. CW/RTTY/ASCII/AMTOR capabilities will be discussed with a general structure covering many different computers.

31 Years and 120,000 QSO's Later. Stan Griffiths will present 22,000 QSL cards that are the direct result of 31 years of being a ham with over 120,000 contacts. Stan offers an unusual guided tour through his QSL file stopping at some truly weird cards on the way. Colorful slides of dozens of cards will be presented and explained. See the JA that sent more cards than anyone else. See the bootlegger that actually confirms his contacts. This seminar is strictly for fun with no emphasis on electronics at all.

DXpedition. Bill Rindone, WB7ABK has traveled in 64 different countries and operated in more than 25 of them including such rarities as YMQ (Geyser Ref), VQB (Chagos) VK9XX (Christman Island), and TA7ABK (Turkey). One of his businesses is safari outfitting, arranging hunting trips to Africa and Asia, which accounts for his extensive traveling. Bill will show us slides of several past DXpeditions spanning the last 25 years, including many Bill himself was on.

Antenna Design & Testing. Tim Pettis, KL7WE is an avid moonbouncer and works in the communications field at Alascom in Anchorage, Alaska. He will cover some techniques in yagi antenna design including scaling (designing and testing at UHF and translating the results for use at HF). Tim will also discuss simple test instruments that you can use to test antenna performance. Tim will show us the very same antenna that he built, that won the 432mhz competition at the Central States VHF Conference last year.

SPEAKER TOPIC INFORMATION (continued)

AMTOR—Is it Better than Conventional RTTY? Dr. Alan Chandler, Vice President of Engineering at Advanced Electronic Applications, Inc. (AEA) will be presenting a description of AMTOR, what it is, how it is accomplished and what it can do for you.

Basic Antennas for Fun and Pleasure. Mark Walker, W7CLU will describe some basic antennas that are low in cost and easy to construct. Mark is good at describing in a light manner how antennas work and how they are put together. Maybe he will show us how to make an easy 2 meter antenna in a cowboy hat. Mark will present some light basic antenna theory.

Traffic Handling Basics. Vic Seeberger, W7VSE is the Section Traffic Manager and is very active in local and regional traffic net operation. Vic promises to present a lively, informative, program on traffic handling and the National Traffic System. Vic will be joined by Bob, WB7WOW and possible other expert traffic handlers to present to you all you need to know to get that message delivered.

Introduction to Moonbounce (EME) & Moonbounce DXpedition. Lance Collister, WA1JXN was the first person to contact W5LFL this year but is also very active in moonbounce. Lance recently went on a DXpedition to the Bahamas where he worked 65 stations on EME, one on meteor scatter and a number of Florida contacts via tropo. Lance's slides of the temporary setup in the Bahamas will serve well to illustrate what is required to set up a starter EME station.

Improving Trap Antenna Efficiency & Bandwidth. Kenneth Glanzer, K7GCO will present some really innovative ideas on how to improve the efficiency of trapped verticals, yagis and mobile antennas. Ken will also show us some antenna designs for 160 and 80 meters. He has had over 50 articles published including the first article on the inverted vee back in 1960. Don't miss this practical program on antennas.

Packet Radio and Its Applications. John Gates, N7BTI will present a general overview of how packet radio works, with a possible demonstration of the AEA packet terminal to be released sometime in June, 1984. The discussion will be based on the protocol of the Tuscon Packet board which is the most widely accepted system in use. John Kelley, W7KKN will also be on hand to present the operational aspects of packet radio in the Seattle-Tacoma area including packet repeaters and bulletin boards and the possibilities of linking to the Portland area.

USAF OTH Radar. Ed Lyon, ex-W8NJZ (now reissued to someone else), will discuss the U.S. Air Force Over-the-Horizon Radar program. Ed is employed by Stanford Research Institute in Washington, D.C. He will contrast our approach to this technology with Russia's approach which we have come to know as the "woodpecker." Most hams are not aware that such a system was operational for an 18 month period in Maine.

PORTLAND RADIO

1234 S.W. STARK STREET • PORTLAND, OREGON 97205

WELCOMES

OREGON STATE

SPECIAL Discounts!

FEATURING:

**ICOM
KENWOOD**

and most
MAJOR LINES

Ladies:

STOP BY FOR YOUR
FREE GIFT!

...From P.R.S.

BALLOONS FOR THE KIDS!

PORTLAND RADIO SUPPLY



Judy



Ron



Joe



Al



Ke

BONUS

CHECK OUR PRICES,

GOOD FOR 10%
ANY ITEM AT OUR
\$99.95 C

Good June 4th 1

RADIO SUPPLY

PORTLAND, OREGON 97205 • (503) 228-8647

WELCOME YOU to the

HAM CONVENTION

STOP BY

for a

FREE

VHF

checkup!



Evan



Jim

FACTORY TRAINED TECHNICIAN

BUCKS

YOU'LL BE SURPRISED!

DISCOUNT ON
STORE PRICED AT
OR LESS!!!

June 30th 1984

20% off! -on

TOWERS & HF ANTENNAS!

CONSIGNMENTS WELCOME!

TRADES ACCEPTED!

YOUR RADIO'S BEST FRIEND!

SPEAKER TOPIC INFORMATION (continued)

OSCAR. Bob Herndon, W7XN. Operating through OSCAR is becoming more and more popular. He will tell you how he works OSCAR with his station from Milwaukie, Oregon. He'll discuss transceivers, antennas, preamplifiers, orbit data, and where to get the answers to your questions about working through amateur satellites. Remember, you don't have to be an electronic engineer to operate OSCAR, and it can be fun.

Proper Procedures for Repeaters. Jim Clary, WB9IHH and Clay Freinwald, K7CR will present rules and operating procedures for the use of repeaters. They will answer questions like; who owns them? Who runs them? What makes a repeater work and many more.

W6OAT Slides & Sound Track of 1st Kingman Reef DXpedition. Good presentation with lots of intrigue, murder and piracy.

National Weather Service — Impending Weather Warning System. Phil Peck, National Weather Service, will present an overview of the NWS system detailing different types of weather warnings, how hams can play a role in helping the NWS as observers reporting daily weather patterns. Amateurs already throughout the country help in severe weather situations providing advance warning to the NWS.

ELT SAR - SAT. Mr. Jim Holden, State of Oregon, Aeronautics Division will offer the latest developments in ELT Search and Rescue - Satellite aided tracking and how hams can plan an important role. Ground detection techniques in locating ELT's and the probability of success will also be discussed.

Emergency Services & the Red Cross. Dave Lievsay, K7UUH will present an overview of how Portland area hams have organized to support the Red Cross in a local disaster. Lea Ball, AL7W speaks on interfacing local traffic with the national traffic system. Tom Rickert, N7CPA, (SEC) will present the ARES function in case of an emergency.

“INNOVATION, ADAPTABILITY AND STYLE ARE INTEGRAL PARTS OF QUALITY”

*MANUFACTURERS OF COMMUNICATION
AND COMPUTER CONSOLES.*

3 STYLES: CLOSET, FLOOR 6' WIDE or 7' WIDE

Call Matthew Price for information

PRO-COMM CONSOLES

390 22nd St. N.E.

Salem, OR 97301

VISA

MASTERCARD

(503) 399-1381

EXHIBITORS

ABC Communications, Seattle, Wa.
Accurate Engraving Service, Portland, Or.
Advanced Computer Controls, Cupertino Ca.
AEA, Lynwood, Wa.
Amateur Radio Relay Group, Portland, Or.
American Radio Relay League, Newington, Ct.
AMSAT
Antronics of Oregon, Aloha, Or.
Apple Screenprint Co., Seaside, Or.
ARES
B S Typographics, Portland, Or.
C-Comm, Seattle, Wa.
Contemporary Technology, Salem, Or.
Curlys Engraving, Portland, Or.
Electro Service, Co., Redmond, Wa.
Harry Lewis, W7JWJ Code Contest, Bellevue, Wa.
Jinx Electronics, Portland, Or.
Kantronics, Lawrence, Ka.
Larsen Electronics, Vanvouver, Wa.
Linn/Benton/Lincoln Emergency Repeater Assn.
Buds Specialties
Multi-Band Antennas, Canoga Park, Ca.
Nova Earth Stations, Beaverton, Or.

Oregon Tualatin Valley ARC, Beaverton, Or.
Pro-Comm Engineering, San Diego, Ca.
Portland ARC, Portland, Or.
Portland Radio Supply, Portland, Or.
QCWA, Beaver State, Albany, Or.
H. Stewart Designs, Oregon City, Or.

Solid Wood Call Signs, Milwaukie, Or.
Trio-Kenwood, Compton, Ca.
Willamette Valley DX Club, Portland, Or.
10 - 10 City of Roses Chapter, Portland, Or.
USQS/KM7Z, QSL Service, Mulino, Or.
ICOM America, Seattle, Wa.

Note: Due to publication deadlines, we apologize if there are any exhibitors not included in the above listing.

Scan the World.



R-2000

SSB, CW, AM, FM, digital VFO's, 10 memories, memory/ band scan, optional 118-174 MHz coverage...

The R-2000 is an innovative all-mode SSB, CW, AM, FM receiver that covers 150 kHz-30 MHz, with an optional VC-10 VHF converter unit to provide coverage of the 118-174 MHz frequency range.

R-2000 FEATURES:

- Covers 150 kHz-30 MHz in 30 bands. UP/DOWN band switches. VFO's tune across 150 kHz-30 MHz.
- All mode: USB, LSB, CW, AM, FM.
- Digital VFO's. 50-Hz, 500-Hz or 5-kHz steps.
- F. LOCK switch.
- Ten memories store frequency, band, and mode data. Each memory may be tuned as a VFO. Original memory frequency may be recalled.
- Lithium batt. memory back-up. (Est. 5 yr. life).
- Memory scan. Scans all or selected memories.
- Programmable band scan. Scans within programmed bandwidth.
- Fluorescent tube digital display of frequency (100 Hz resolution) or time. DIM switch.
- Dual 24-hour quartz clocks, with timer.
- Three built-in IF filters with NARROW/WIDE selector switch. (CW filter optional.)
- Squelch circuit, all mode, built-in.
- Noise blanker built-in.
- Tone control.
- Large front mounted speaker.
- RF step attenuator. (0-10-20-30 dB.)
- AGC switch. (Slow-Fast.)
- "S" meter, with SINPO "S" scale.
- High and low impedance antenna terminals.
- 100/120/220/240 VAC, or 13.8 VDC (Option) operation.
- RECORD output jack
- Timer REMOTE output (not for AC power)
- "Beeper"
- Carrying handle.



R-1000

High performance receiver
• 200 kHz-30 MHz • digital display/clock/timer • 3 IF filters • PLL UP conversion
• noise blanker • RF step attenuator • 120-240 VAC (Optional 13.8 VDC).



R-600

General coverage receiver • 150 kHz-30 MHz • digital display • 2 IF filters
• PLL UP conversion • noise blanker • RF attenuator • front speaker • 100-240 VAC (Optional 13.8 VDC).

Optional accessories:

- VC-10 118-174 MHz converter.
- HS-4, HS-5, HS-6, HS-7 headphones.
- DCK-1 DC cable kit.
- YG-455C 500-Hz CW filter.
- HC-10 World digital quartz clock.
- AL-2 Surge Shunt

KENWOOD

TRIO-KENWOOD COMMUNICATIONS
1111 West Walnut/Compton, CA 90220
Telephone: (213) 639-9000

MAJOR PRIZES

First Prize: ICOM IC 745 HF Transceiver

Second Prize: YAESU FT 757 HF
Transceiver

Third Prize: Kenwood TM 201A 2m
Transceiver

Fourth Prize: Commodore 64

Banquet Door Prize: Commodore VIC-20

Special Banquet Prize: ProComm Console

Special Ladies Prize: 2 nights lodging, 2
nights dinner & Sunday Brunch at any
Red Lion/Thunderbird, plus \$70
spending money.

Early Bird Prize: Choice of Ham IV Rotor,
Astron 35A Power Supply, Yaesu 203 HT

Prize Donors

ABC Communications
Accurate Engraving Service
Antronics
Apple Screenprint Co.
ARRL
C-Comm
Curly's Engraving
Electro Service Co

H - Stewart Designs
Larsen Electronics

Portland Radio Supply
ProComm Consoles
Solid Wood Call Signs
Spider Antennas
WorldRadio Magazine

Note: All registrants, including convention sponsors,
are eligible for prize drawings and/or contest awards.

Note: Due to publication deadlines, we apologize if there
are any prize donors not included in the above listing.



OREGON HAM SALES

Jim Walburn-WB7TAZ
Owner

Sales ★ Trade-ins ★ Consignments
We Buy Complete Estates

HUGE SURPLUS INVENTORY
Complete Service Department

ALL MAJOR BRANDS

★ ICOM ★ KENWOOD ★ DRAKE ★ YAESU
★ HYGAIN ★ TENTEC ★ DENTRON
★ CUSHCRAFT ★ HUSTLER
and many many more!



1-800-452-5124

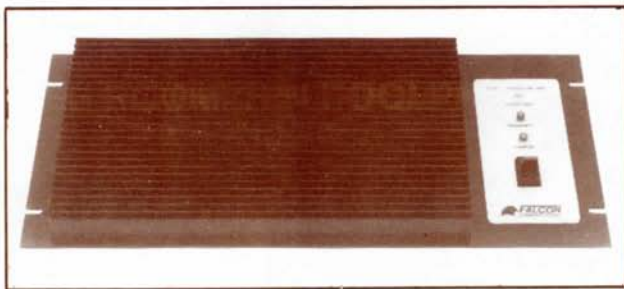
409 W. 1st Ave.
Albany Ore. 97321
503-926-4591

Mon. - Fri. 10 AM - 5 PM
Sat. 10 AM - 3 PM
Closed Sunday

CONTRIBUTORS

American Radio Relay League
Roy Neal, K6DUE, Banquet Speaker
Larry Price, W4RA, ARRL President
Jim Clary, WB9IHH, ARRL Repeater Directory Editor
Greg Milnes, W7AGQ
 Banquet Master of Ceremonies
Mary Lewis, W7QGP
 N/W Division Director, ARRL
Bill Shrader, W7QMU
 Oregon State SM, ARRL
Claudia Gray, AAUW (Seminar)
Stan Griffiths, W7NI (Seminar)
Dr. Phil Anderson, WØXI (Seminar)
Dave Lievsay, K7UUH (Seminar)
Dr. Alan Chandler, AEA (Seminar)
Canyon Printing, Beaverton
Northwest Bookbinding
Seaside School District
Ron Mayer, K7BT (Printing)
Warren Winner, W7JDT (Printing)
Tim Pettis, KL7WE (Seminar)
Roy Lewallen, W7EL (Seminar)
Vic Seeberger, W7VSE (Seminar)
Safeway Stores, Seaside
Our Savior Lutheran Church
Seaside Elks Lodge
Lance Collister, WA1JXN (Seminar)
Mark Walker, W7CLU (Seminar)
Kenneth Glanzer, K7GCO (Seminar)
Ed Lyon, Stanford Research Institute (Seminar)
John Gates, N7BI (Seminar)
Bill Rindone, WB7ABK (Seminar)
Bob Herndon, W7XN (Seminar)
Tom Rickert, N7CPA (Seminar)
Lea Ball, AL7W (Seminar)
Phil Peck, National Weather Service (Seminar)
Jim Holden, State of Oregon (Seminar)

***Note:** Due to publication deadlines, we apologize if there are any contributors not included in the above listing.*



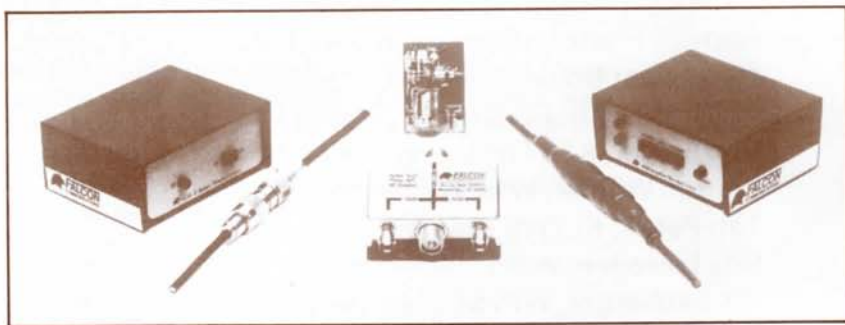
MOSFET Repeater Amplifiers

Basic Amplifiers with the low noise advantages of MOSFET's.

4111 100 Watt 2 Meter Amplifier - At 13.6 Volts; 10 Watts in = 90 Watts out. At 16 Volts; 10 Watts in = 100 Watts out. **\$295**

4112 100 Watt 220 MHz Amplifier - At 13.6 Volts; 10 Watts in = 70 Watts out. At 16 Volts; 10 Watts in = 80 Watts out. **\$295**

Other repeater amplifiers available.



Useful Accessories

4109 Plug-in 2 meter Receive Preamp - For Falcon power amplifiers. 12 dB gain, 2dB noise figure. **\$36**

4110 Plug-in 220 MHz Receive Preamp - For Falcon power amplifiers. 12 dB gain, 2.5 dB noise figure. **\$39**

4116 2 Meter Receive Preamp - Base or mobile use. 16 dB gain, 2 dB noise figure. Automatic T/R switching. Use with up to 45 Watt transceivers. Requires 12 VDC. **\$63**

4117 Twin 40 dB RF Coupler - Two 40 dB attenuators coupled to thru signal line. Works with various test equipment. Thru line handles transmitter power and is used with wattmeters and dummy loads. Attenuated ports are used to; insert receiver power; sample transmitter power for counters and spectrum analyzers; etc.. The 40 dB attenuation protects the test equipment from damage due to transmitter power. Flat to 520 MHz, useful to 1000 MHz. Maximum transmitter power, 50 Watts. **\$42**

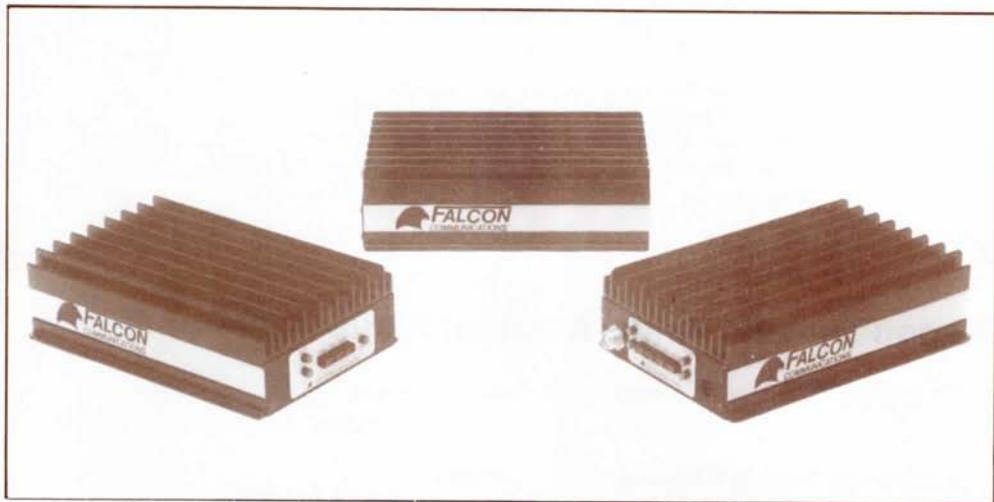


(415) 851-8779
P.O. Box 620625
Woodside, CA 94062



P.O. Box 620625 Woodside, CA 94062 (415) 851-8779

**The only manufacturer offering Amateurs
the advantages of MOSFET RF Power Amps brings you
its latest offerings.**



MOSFET Mobile Power Amplifiers

4101 Complete 2 Meter Handie Talkie Accessory - All mode RF power amp., 2 Watts in = 25 Watts out, 50 Watt max.. Regulated power supply, with adjustable current limit, for HT power or battery charge. 4 Watt speaker amplifier. Optional plug-in receive preamp. You must fabricate a cable to connect to HT; plug supplied.

\$215

4102 Complete 2 Meter Handie Talkie Accessory - All mode RF power amp., 2 Watts in = 100 Watts out. Regulated power supply, with adjustable current limit, for HT power or battery charge. 4 Watt speaker amplifier. Optional plug-in receive preamp. You must fabricate a cable to connect to HT; plug supplied.

\$325

4103 All Mode 100 Watt 2 Meter Amplifier - 10 Watts in = 90 Watts out, 2 Watts in = 30 Watts out. No harm with 25 Watt transceivers. Optional plug-in receive preamp.

\$245

4104 All mode 100 Watt 220 MHz amplifier - 10 Watts in = 70 Watts out, 2 Watts in = 25 Watts out. No harm with 25 Watt transceivers. Optional plug-in receive preamp.

\$245

4105 All mode 100 Watt 2 Meter amplifier - 2 Watts in = 100 Watts out. Optional plug-in receive preamp.

\$295

CONVENTION COMMITTEES

Co-Chairmen:

Doc McLendon, W7GWC, North Coast Repeater Association
Al Berg, WB7SIC, Oregon Tualatin Valley ARC

Vice-Chairman

Warren Winner, W7JDT, Oregon Tualatin Valley ARC

North Coast Repeater Association Committee

Registrations, Convention Station, Exhibit Signs,

Banquet, Registration Desk,

Ladies' Treasure Hunt, Kids' Krayon Korner.

Allen Fenton, N7EYS

Henry Goetze, W7CXX

Dan Hair, K7IJG

Nolan Marion, WB7TWM

Ray Marion, KA7MGC

Jan Marion

Maye McLendon

Nancy Sturdevent

Elmer Templeton, KA7BOO

Tom Wagner, W7KLA

Oregon Tualatin Valley Amateur Radio Club Committee

Advertising Printing & Mailing:

Warren Winner, W7JDT

Ron Mayer, K7BT

Audio Visual:

Neil McKie, WA6KLA

Banquet Speaker:

Ron Magnus, WA7GFE

Bunny Hunt:

Roger Steyaert, K7RXV

Mark Cattell, N7CRQ

Convention Brochure:

Warren Winner, W7JDT

Ron Mayer, K7BT

Exhibitors:

Randy Stimson, KZ7T

Bert Schmidt, W7JWG

John Koenig, NB7W

Al Berg, WB7SIC

Flea Market:

Gino Buell, KA7KBH

Jack Smithson, KA7HOJ

Volunteer Testing:

Bob Orr, KB7CC

Treasurer:

Jeff Freedman K7JF

Prizes:

Don Branda, N7DDK

Wally Boleen, KC7TB

Warren Knight, N7BIJ

Mike McQueen, KC7U

Security:

Doc Miller, KA7BSD

Linda Cereghino, N7CZY

Seminars:

John Haide, WA7CZA

Warren Winner, W7JDT

Stan Griffiths, W7NI

Leonard Thompson, KA7IOB

Exhibit Aids:

Darwin Durr, K7PSD

Ralph Karls, WB7VGS

Wes Allen, K7WWG

Hanford Van Ness, N7CNW

Mike Boyd, N7DKQ

Randy Cobb, KA7HJT

Mark Cattell, N7CRQ

Chuck Sturdevent, N7CIL

THINGS TO SEE & DO

Astor Column. Astoria.

Columbia Lightship. Moored at the Coast Guard Pier at the foot of 16th, Astoria.

Maritime Museum. 17th and Marine Drive, Astoria.

Fort Astoria. 15th & Exchange, Astoria.

Flavel House. Clatsop County Historical Society, 8th & Exchange, Astoria.

Astoria Bridge. A part of U.S. Highway 101, joins Washington and Oregon.

Battery Russell. Fort Stevens State Park.

Peter Iredale. Fort Stevens State Park.

Fort Clatsop. Museum, movie, tour replica of the fort, canoe landing and ranger demonstration.

Salt Cairn. Lewis and Clark Way, Seaside.

Seaside Aquarium. 2nd Ave. & Prom, Seaside.

Turnaround. End of the Lewis & Clark Trail. End of Broadway, Seaside.

Tillamook Rock Lighthouse. Island off Tillamook Head, best viewed from the point at Ecola State Park, Cannon Beach.

Haystack Rock. Third largest monolith, located in Cannon Beach.

Ecola State Park. Beautiful view of Haystack Rock and Tillamook Rock Lighthouse.

Oswald West State Park & Short Sand Beach. Highway 101 South.

Nehalem Winery. Highway 101 South.

Tillamook Cheese Factory. Tillamook.

Tillamook Museum. Tillamook.



Beaver State Chapter

QUARTER CENTURY WIRELESS ASSOCIATION

6126 NE Parkside Dr.
Albany, OR 97321

The Quarter Century Wireless Association, QCWA, welcomes you to the Oregon State/ARRL Convention and to our booth manned by Oregon's Beaver State Chapter #108. Meal tickets may be purchased at our booth for the *Saturday* morning (2 June) 7:30AM get-together breakfast. Have a good time.

73

Frederic H Dickson. W7LBH
Sec-Treas. BSC
QWCA

The North Coast Repeater Association and the Oregon Tualatin Valley Amateur Radio Club

would like to take this opportunity to thank the many hard working individuals who have made the convention a success.

A special thanks to all of the clubs in the Pacific Northwest that were of such great help in advertising the convention.

We are deeply grateful to our many exhibitors for showing us their products. Without them, this would not have been a successful convention.

Until next year...

73 & 88's

Al Berg WB7SIC

Doc McLendon W7GWC

Warren Winner W7JDT

Have a Safe Trip Home



**THIS IS AN
ARRL SANCTIONED
CONVENTION**