



Field Operations

Emergency Communications Workshop
June 2, 2023



Toby L. Clairmont, RN, CEM
KH7FR







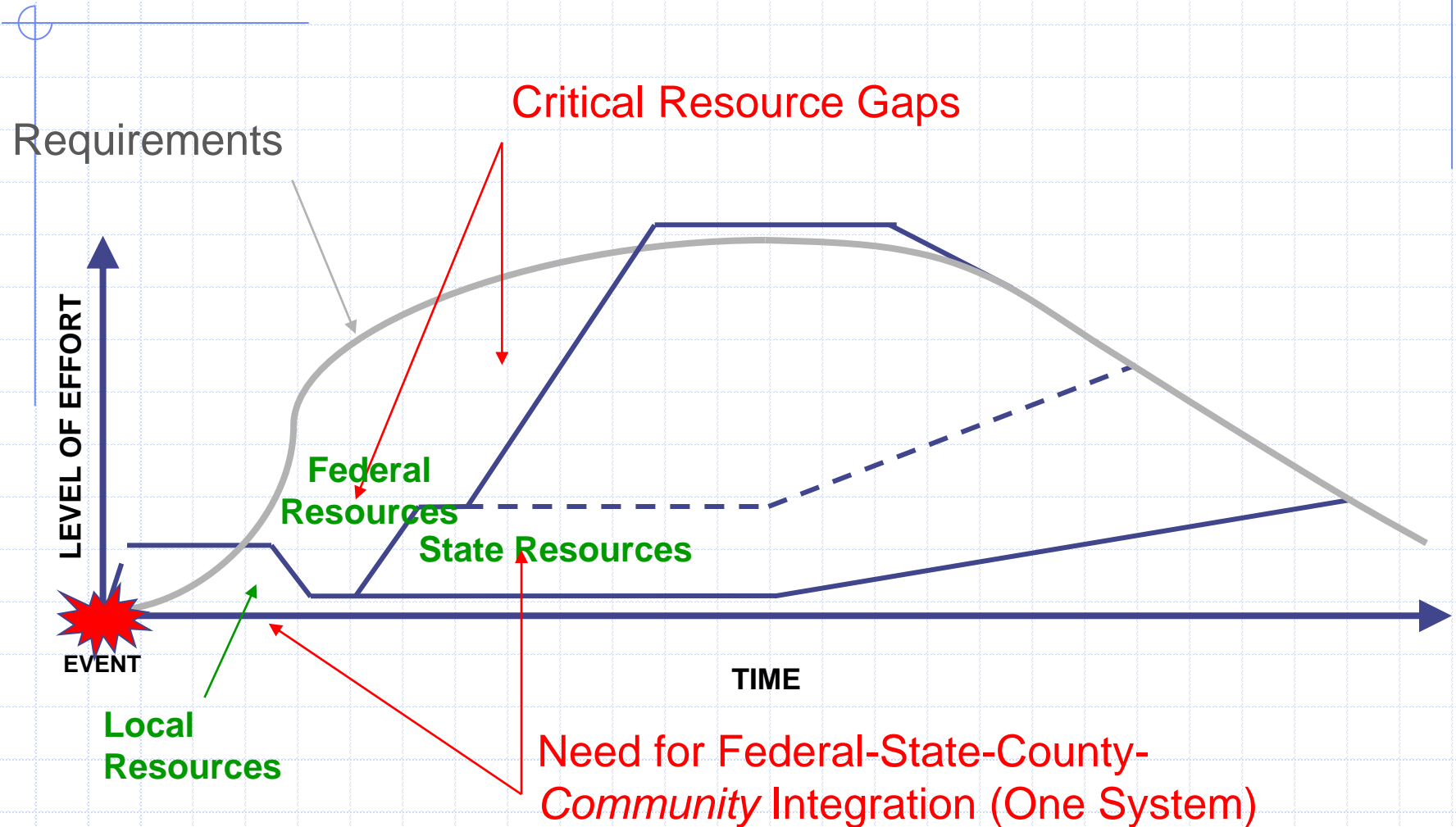


PART I

Response Unfolds



Catastrophic Disaster Operations – Sequence of Response



Government Responsibilities

County

- Warn & evacuate citizens
- Provide first response to local emergencies & disasters
- Process Mayor's Emergency Proclamation
- Conduct damage assessments

State

- Activate the Emergency Operations Center
- Recommend Governor's emergency proclamation
- Coordinate mutual aid assistance
- Coordinate disaster relief operations and support damage assessment

Federal

- Coordinate the delivery of supplemental Federal assistance
- Deploy Incident Management Assistance Teams (IMAT)
- May establish a Joint Field Office (JFO)
- Coordinate with 15 Emergency Support Functions (ESFs)

Government Responsibilities

County

- Warn & evacuate citizens
- Provide first response to local emergencies & disasters
- Process Mayor's Emergency Proclamation
- Conduct damage assessments

State

- Activate the Emergency Operations Center
- Recommend Governor's emergency proclamation
- Coordinate mutual aid assistance
- Coordinate disaster relief operations and support damage assessment

Federal

- Coordinate the delivery of supplemental Federal assistance
- Deploy Incident Management Assistance Teams (IMAT)
- May establish a Joint Field Office (JFO)
- Coordinate with 15 Emergency Support Functions (ESFs)

Government Responsibilities

County

- Warn & evacuate citizens
- Provide first response to local emergencies & disasters
- Process Mayor's Emergency Proclamation
- Conduct damage assessments

State

- Activate the Emergency Operations Center
- Recommend Governor's emergency proclamation
- Coordinate mutual aid assistance
- Coordinate disaster relief operations and support damage assessment

Federal

- Coordinate the delivery of supplemental Federal assistance
- Deploy Incident Management Assistance Teams (IMAT)
- May establish a Joint Field Office (JFO)
- Coordinate with 15 Emergency Support Functions (ESFs)

PART II

Notification & Recall



FACTORS to CONSIDER

1. Defined process to notify and recall is critical to success of the team and their efforts

FACTORS to CONSIDER

1. Defined process to notify and recall is critical to success of the team and their efforts
2. Sudden, unexpected events v. progressively emerging events

FACTORS to CONSIDER

1. Defined process to notify and recall is critical to success of the team and their efforts
2. Sudden, unexpected events v. progressively emerging events
3. Missions v. Freelancing

FACTORS to CONSIDER

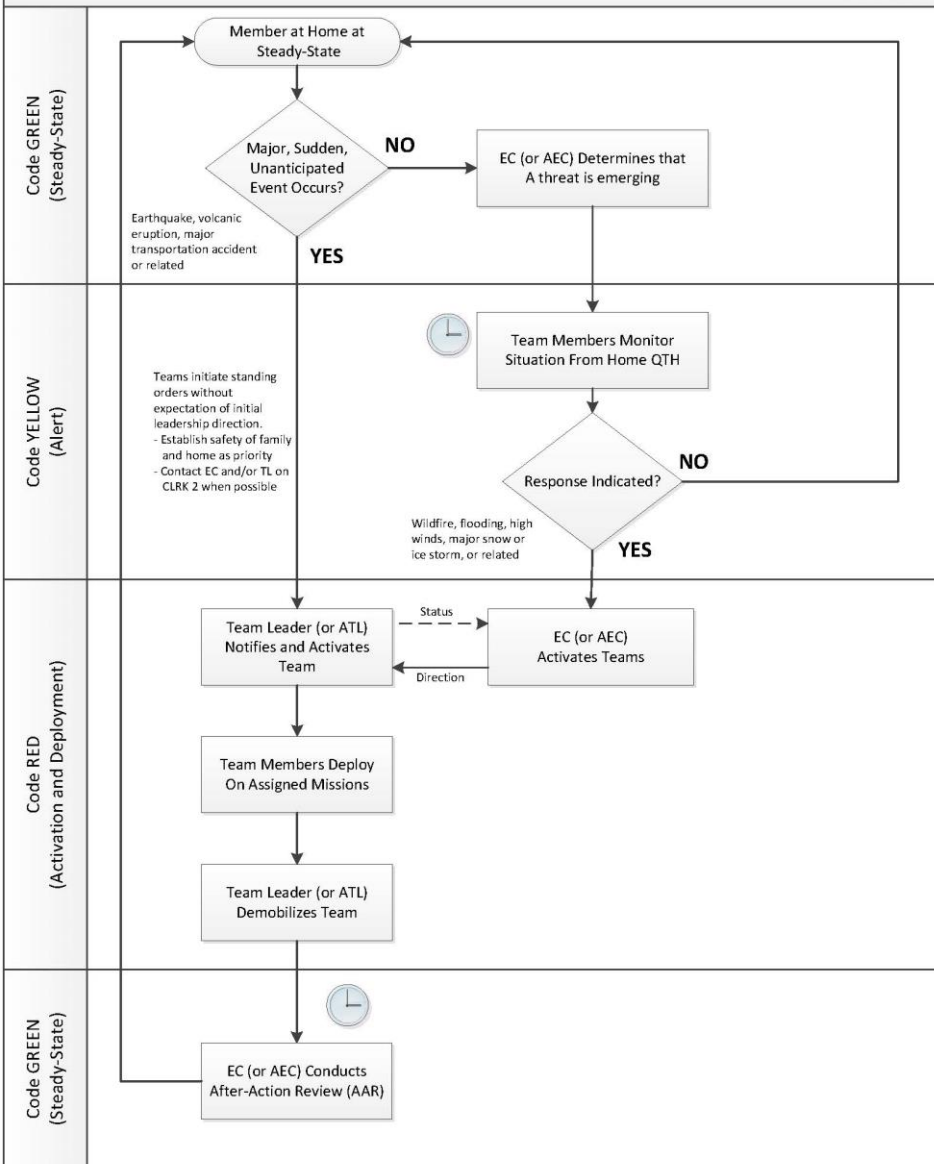
1. Defined process to notify and recall is critical to success of the team and their efforts
2. Sudden, unexpected events v. progressively emerging events
3. Missions v. Freelancing
4. Common terminology

FACTORS to CONSIDER

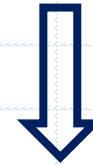
1. Defined process to notify and recall is critical to success of the team and their efforts
2. Sudden, unexpected events v. progressively emerging events
3. Missions v. Freelancing
4. Common terminology
5. Clear expectations

**Clark County Amateur Radio Emergency Service (CCARES)
EMERGENCY NOTIFICATION and RECALL PROCEDURE
Simplified version**

October 2020 Rev. 2



'Steady-State'



'Alert'



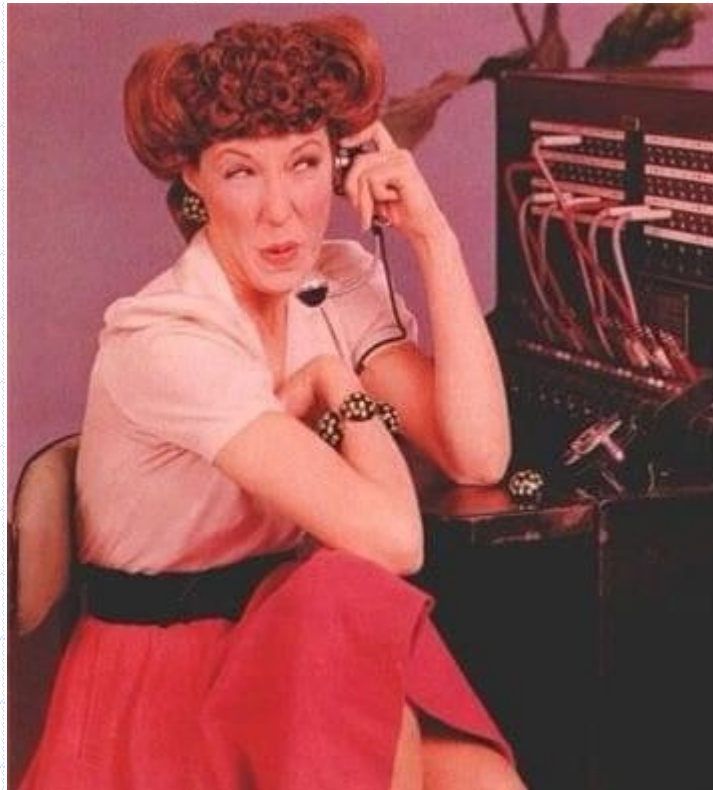
'Activation & Deployment'



'Steady-State'

PART III

Communication Equipment















PART IV

Individual Equipment





PART V

Special Issues



FACTORS to CONSIDER

1. Initial information incorrect, poorly defined and not actionable

FACTORS to CONSIDER

1. Initial information incorrect, poorly defined and not actionable
2. Getting out the door

FACTORS to CONSIDER

1. Initial information incorrect, poorly defined and not actionable
2. Getting out the door
3. Autonomous actions by affected population

FACTORS to CONSIDER

1. Initial information incorrect, poorly defined and not actionable
2. Getting out the door
3. Autonomous actions by affected population
4. Identifying leadership

FACTORS to CONSIDER

1. Initial information incorrect, poorly defined and not actionable
2. Getting out the door
3. Autonomous actions by affected population
4. Identifying leadership
5. Focusing on top priorities

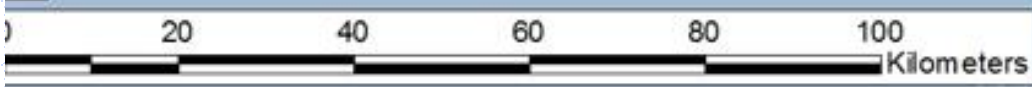




The Honolulu Advertiser
HONOLULU, TUESDAY, AUGUST 14, 1945
PAGES TWO AND THREE

NUCLEAR BLAST FIRED; GLOW BATHES ISLES





Esri, DeLorme, NAVTEQ, USGS, NRCAN, METI, IFC, Swire

Questions?

